



HEADWATERS RESOURCE CONSERVATION AND DEVELOPMENT



2009 Annual Report

*Making Economic and Natural Resource Enhancements in
North Central Pennsylvania*

Message from the Chair:

A popular slogan of the environmental movement is that “we all live downstream.” But that is not always true in the Headwaters RC&D region. St Marys actually straddles the eastern divide. DuBois, which is situated in the Allegheny watershed, gets its water supply from Anderson Run, a headwater stream to the Susquehanna. Potter County sees the birth of three major river systems: the Allegheny, the Genesee, and Pine Creek.

Living in our Headwaters region brings a lot of benefits, not least of which are some of the highest quality streams and best forests in Pennsylvania. But living here also requires more responsibility on our part, because, quite literally, everyone else does live downstream from us. Our agriculture, forestry, industrial, and resource extraction practices have a direct impact from the Three Rivers in Pittsburgh to the Chesapeake Bay.

So our projects— such as no-till workshops, noxious weed removal, acid mine drainage remediation, the Conservation Stewardship Program, and the many other efforts which you can read about in this report – not only enhances and maintains the high quality of our region, but also benefits everyone else who lives downstream. This is a unique and awesome responsibility that we have, which makes our work even more important.

Additionally, our region is now faced with what I think is the biggest challenge and opportunity in at least two generations. Marcellus shale development will change everything in the Headwaters region. Some for the better, but some for the worse. Again, Headwaters RC&D is uniquely situated, and is composed of a board with the right expertise, to be a leader in addressing Marcellus shale development to ensure that our communities benefit from the development without compromising our exceptional landscape and water resources.

It is a tall order. It is easy to become overwhelmed with the challenges. Can we save and protect our precious resources? Can we promote sustainable development that ensures our children and their children will grow up with clean air, lush forests, and pristine streams full of brook trout? Can we preserve our quality of life? E.F. Schumacher, a prescient advocate for sustainable economies, had some advice on these sorts of questions:

This [type of] question is often asked, but no matter what the answer, it will mislead. The answer “Yes” would lead to complacency, the answer “No” to despair. It is desirable to leave these perplexities behind us and get down to work.

So let’s roll up our sleeves and get to work. There’s still a lot to do.

Matt Marusiak



Matt Marusiak, Chair of Headwaters RC&D Council

Conservation is the foresighted utilization, preservation and/or renewal of forests, waters, lands and minerals, for the greatest good of the greatest number for the longest time.
—GIFFORD PINCHOT, first Chief of the US Forest Service, (1905), 1865–1946

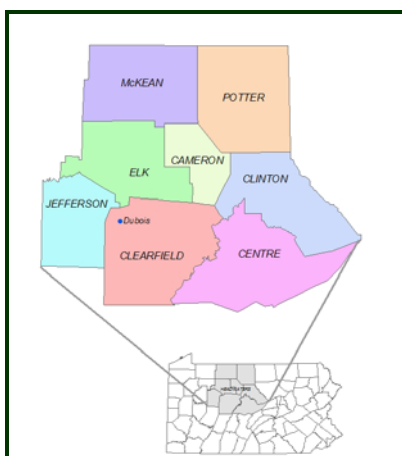
HEADWATERS RC&D 2009 Annual Report



2009 Annual Report

JUNE 2010

History of and Service Area of Headwaters RC&D Council



Resource Conservation and Development area. In 1988 and 1989, two more counties were added establishing an eight county area operating today which includes; Cameron, Centre, Clearfield, Clinton, Elk, Jefferson, McKean, and Potter counties. The council, RC&D Coordinator, and staff meet quarterly throughout the year visiting a different county at each meeting.

of the region. Each of the eight counties within the Headwaters RC&D region are represented on the Council by appointees from the County Commissioners, County Conservation Districts, County Planning Departments and Planning Commissions.



The Headwaters Resource Conservation and Development Council was formed in 1978 as a 501(c)3 non-profit organization to coordinate both public and private agencies for projects developed to address the needs of six counties in the Headwaters

Headwaters RC&D manages projects that specifically address forest resources, community and economic development, environmental education, water resources, and recreational needs

Mission and Goals of Headwaters RC&D

Mission Statement

The Headwaters RC&D Council promotes quality of life and economic sustainability by restoring, protecting, and enhancing natural and cultural resources in north central Pennsylvania. We do this by providing technical assistance, implementing resource conservation projects, fostering volunteer efforts, and developing financial partnerships.

The Headwaters RC&D Council exists to:

- Promote quality of life and sustainable living
- Protect and restore natural resources
- Assist and implement natural resources and community development projects
- Provide stewardship education
- Facilitate regional cooperation

The goals of Headwaters RC&D developed through strategic planning include; Council Sustainability, Education & Public Outreach, Board Development, Development of an Executive Director Position, Defining Roles of Council and Headwaters Charitable Trust, and Developing Methods to Identify and Prioritize High Impact Projects.

Headwaters RC&D Council Committees include:

- Policy
- Finance
- Forest Resources
- Water Resources
- Community & Economic Development
- Agriculture
- Sinnemahoning Stakeholders
- Website

INSIDE THE REPORT

MESSAGE FROM CHAIR	2
HISTORY AND REGION	3
MISSION AND GOALS	3
CURRENT PROJECTS	4
CONFERENCES & WORKSHOPS	5
COMMITTEE REPORTS	6-7
COUNCIL REPRESENTATION	8
2009 EXPENDITURES	9
DISCRIMINATION STATEMENT & STAFF	8

Snow Shoe Rail Trail - Trailhead Development

In April of 2009, the Department of Conservation & Natural Resources, Snow Shoe Rail Trail Association (SSRTA), Coordinator for Headwaters RC&D, and the engineering consultant met to do a final inspection for the two grants for the Gillentown Trailhead and the resurfacing project from the Gillentown Trailhead to Clarence. The Gillentown Trailhead was a Headwaters RC&D project and the resurfacing was funded through a DCNR SSRTA grant. The final designs were completed

for the Gillentown Trailhead resulting in a restroom facility and a gate and fencing near the memorial kiosk. Plans for the pavilion and the non-motorized parking area were finalized and the work will be completed with assistance of area volunteers.

Another success to mention for the SSRTA was the grand opening of the Black Bear Trailhead held on October 31, 2008. Attendance was remarkable and included representation from SSRTA,

local legislators, Department of Conservation and Natural Resources (Moshannon State Forest District Office), Centre County Sheriff's Office, Centre County Planning Office, WJAC TV, and many local residents and individuals from local businesses. This trailhead has become a reality because of the many working partnerships and the dedication and hard work of many volunteers.



Restroom Facility at Gillentown Trailhead



Black Bear Trailhead

Fuels for Schools and Beyond

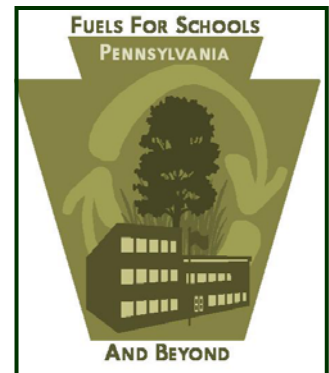
Headwaters RC&D has embraced the opportunity to promote the use of local renewable resources to provide reliable energy for Pennsylvania schools and businesses. Headwaters RC&D Coordinator attended working group meetings, a public workshop in Kersey, and a public meeting in Kane where 32 attendees participated in the evening informational meeting that concluded with a tour of the Kane Biomass Boiler system led by John Rook, facilities manager of the Kane Area School District.

Accompanied by a Fuels for Schools and Beyond representative, a visit and meeting was conducted with the Penns Valley Area School District officials (Centre County) to collect preliminary data about the school's facilities to develop a preliminary feasibility report. Because this project is also being embraced by other RC&D councils within the state there is great opportunity to network with the other councils and to learn from their success stories.

Headwaters will continue to offer educational opportunities and technical assistance to reduce the dependence on fossil fuels and replace them with renewable energy sources such as wood residue and agriculture energy crops.

At an average of twelve acres per mile, and with widths up to 400 feet, abandoned lines represent a million-acre resource available for many public uses, particularly rails: conservation trails for wildlife protection, nature interpretation, and open space; recreation trails for hiking, biking, walking, skiing, and horseback riding; trails for cultural interpretation and historic preservation; and access trails to rivers and to public lands for camping, hunting, and fishing.

—DAVID BURWELL, President. Rails-to-Trails Conservancy, 1988



Northwest Grazing Conference

The interest in grazing is stronger than ever as farmers look for ways to lower input costs and meet the demands for milk products. The 2009 conference in partnership with USDA-NRCS, PSU Agricultural Extension, local conservation districts and Headwaters RC&D was held in DuBois with a record attendance of over 250 people.

The keynote speaker was Kit Pharo, of Cheyenne Wells, Colorado, a nationally-known cattleman and

expert on profitable grazing and beef production. Kit spoke at length about the benefits of matching animal size and needs to what a particular farmers land can provide with minimal or no inputs. Other sessions included discussion on; Pasture/Hay/Crop Risk Management, Utilizing Pasture With a TMR, Production vs. Profit- Which Will You Choose?, Three Keys to Profitability, and Cost Share Program Updates.

Thanks to all who assisted in planning this annual conference. The success of all agencies partnering together, along with experienced and influential speakers made the 2009 conference was a huge success bringing in more attendees than the previous year.



Biomass Energy Workshop

The Central PA Biomass Energy Workshop was held on July 21, 2009, at Penn State University, State College, PA. Over 66 participants from as far as North Carolina attended the workshop to learn the latest about biomass energy and how it can be grown and utilized in Pennsylvania. Headwaters RC&D partnered with Penn State Extension, USDA-NRCS, and Biomass Connections to plan and put this informative workshop together.

The sessions for the workshop included; What is Biomass Energy and Why Does it Make Sense?, Warm Season Grass Establishment in Central PA, Potential of Mineland for Biomass Energy Production, Biomass Benefits for Wildlife, Financial Resources for Local Producers, Industrial Utilization of Co-firing Biomass with Other Fuels, and Cellulosic Ethanol Production.

The workshop ended with a tour of Biomass energy projects at Penn State featuring a mobile pellet unit for switchgrass. Headwaters and it's partners will continue to work toward the promotion of sustainable biomass energy crop production through a wide variety of projects.



Weed Wildlife & Conservation Stewardship Program (CSP)

Headwaters RC&D has entered into an agreement with USDA-NRCS to carry out a program designed to promote the awareness of the Conservation Stewardship Program (CSP) and the Weed Control/ Wildlife Habitat Program. One aspect of the CSP program will be to hold public meetings and to target forest landowners to educate them on CSP as well as forest stewardship and a matrix of other programs. The Weed and Wildlife Habitat Program will help assist producers better

understand weed control methods and wildlife habitat management under USDA NRCS programs. Data for this program has been entered in an Access database and will enable Headwaters RC&D to better understand the benefits of the program and serve as a tool to develop a strategy in providing technical assistance to CREP and non-CREP participants under this agreement. Headwaters's RC&D Agriculture Committee has also established a goal

of forming an Ad hoc Weed Control/ Wildlife Habitat Committee and will continue to work on this project in 2010. Project partners for both programs include; DCNR-Bureau of Forestry, Penn State Cooperative Extension, NRCS, PA Game Commission, Farm Service Agency, Conservation Districts, and PA Tree Farm Program.



Sinnemahoning Stakeholders Committee

The Sinnemahoning Stakeholders Committee (SSC) was formed through a Memorandum of Understanding between the Pennsylvania Department of Environmental Protection (DEP) and Headwaters Resource Conservation and Development Council RC&D.

The SSC is responsible for the management and distribution of funds derived from a civil settlement between the DEP and Norfolk Southern Railway as a result of a sodium hydroxide spill that took place on June 30, 2006, on Big Fill Run off Gardeau

Road in Norwich Township, McKean County.

Two grant rounds have been completed where awards totaling \$235,936 have been distributed for 17 different projects. The money that has been awarded was also used to leverage over two million dollars.

The types of projects are fish habitat enhancement, invasive species management, environmental education, volunteer monitoring, Acid Mine Drainage (AMD) treatment, AMD

assessment, stream bank stabilization, and illegal dump cleanup.



Agriculture Committee Activities Report

Headwaters partnered with PSU Ag Extension, USDA-NRCS and Clearfield and Jefferson Conservation Districts to put on a one-day no-till workshop for area producers held on March 26, 2009. Commons questions about no-till transition, manure management, herbicides and even oil seed crops for bioenergy were addressed. Around 25 farmers and agency personnel attended.

This No-Till Outreach Support Program received financial assistance through Capital RC&D for holding No-Till Outreach Programs. Headwaters RC&D along with the Jefferson County Conservation District hosted an Aerial Seeding Demonstration on August 14, 2009, on two farms in Jefferson County. This meeting was the first in a series of field days focused on promoting cover crops and no-till farming throughout Jefferson, McKean and Potter Counties. Headwaters shared pictures and a video from this demonstration on its website. A Cover Crop Field Day was also held in Jefferson County on Oct. 9, 2009, as a follow-up to the Aerial Seeding Demonstration. Additional field days were

also held in the spring of 2010 in Jefferson, McKean and Potter Counties.

The CREP Weed Control/Wildlife Habitat Project was to continue to offer technical assistance to CREP program participants in the eight-county Headwaters RC&D area. This technical assistance was provided by contracting with qualified service providers (Conservation Districts or a Private Contractor) to conduct in-field visits to survey the condition of the CREP planting. The contractor then provided verbal advice and/or written educational materials to assist the landowner in implementing the recommendations. There were a total of 144 field visits completed under the second amendment of this agreement. Multiflora rose and Canada thistle were far and above the most common weed problems found in the CREP plantings that were inspected.



Community and Economic Development Committee Report

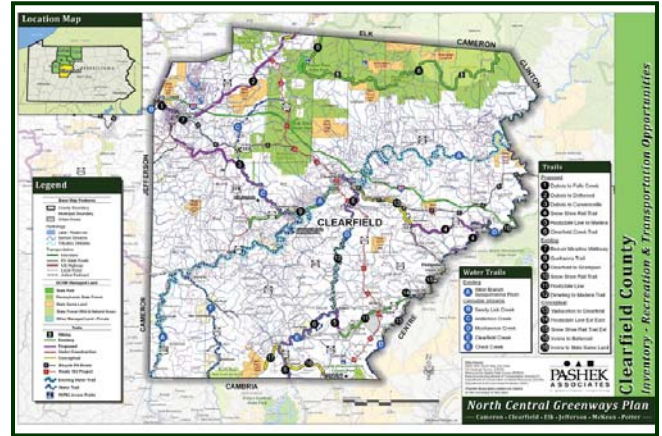
The Committee worked with Coordinator Adam Dellinger, and the Agriculture Committee on an Alternative Energy Workshop for landowners interested in growing biomass crops for energy. April of 2009 the Committee submitted two proposals. The PA Fuels for Schools Workshop was held in Kane, with Headwaters being instrumental to organize.

The PA Wilds Trails Workshop was held May 30th in DuBois. Headwaters RC&D Coordinator attended the event and conveyed the Council's involvement in trails projects and how they

might help other groups with new projects and trail development.

The Committee discussed with Council the Act 167 Stormwater Management Program cuts in the State budget.

Looking ahead to 2010, the Committee will be involved in the implementation of the North Central Region Greenways Plan throughout those counties. Centre and Clinton county have also completed their Countywide Greenway plans and those will be coordinated with the North Central Region Greenways Plan.



Recreation opportunities map from North Central Greenway Plan

Forest Resource Committee Initiatives

In 2009, one project was submitted to Council by the Forest Resource Committee for approval. This project was the Biomass Demonstration Project. The project would have switchgrass and hybrid poplar demonstration plots in each of Headwater's eight counties. From these plots, the landowner would receive guidance on developing a biomass fuel in our region. Each plot would also

have educational signs and a field day for the public to come and visit.

The Committee has also been reviewing the feasibility that was completed a few years ago for a biomass energy plant in Emporium, Cameron County. The group has been reviewing the study to see if it is still up to date and applicable to the region and in contact with Dr. Tim

Pierson of Penn State University, who is chair of a similar project in Smethport, McKean County.

The Forest Resource Committee will continue to work on these projects in 2010, as well as development of the Cooperative Weed Management Area in the Sinnemahoning Watershed.



PA RC&D and National RC&D Association Meetings

The PA Association of Resource Conservation and Development Councils 2009 Annual Conference was held September 14-16, hosted by Penn Soil RC&D, and sponsored by the Oil Region Alliance and PA RC&D. The conference included a Financial Management Workshop, "How to Run a Profitable 501(c)3 Organization", by Sara Knight, CPA and hosted a tour of Two Mile Run Park and Ernst Conservation Seeds.

The Business meeting for PA RC&D was held during the conference at Oil Creek & Titusville Railroad's Perry Street Station on September 15th. Coordinator, Adam Dellinger and individuals from Headwaters RC&D Council were present at the Conference. Report from those in attendance were that it was a very successful conference and an opportunity to network with the other RC&D Coordinators within the Commonwealth and their representative Councils.

The National Association of RC&D Councils 2009 Conference was held June 14-17, 2009 in Albuquerque, New Mexico offering sessions on Sustainable RC&D Councils, Ethics and the USDA, Area Planning, Financial Management and many other interesting and valuable training tracks. Adam Dellinger, Coordinator was lucky enough to go to the conference by train! Matt Marusiak, Council Chair attended the conference representing the Council.



Headwaters RC&D Council Members

Matt Marusiak, Chair, North Central PA Regional Planning & Development Commission

Beth Rider, Vice-Chair, Centre County Office of Planning & Community Development

Jan Hampton, Secretary, Cameron County Conservation District

Deborah Lunden, Treasurer, McKean County Planning Commission

Kate Morgan, Cameron County Conservation District

Dr. Joseph Blackburn, Cameron County Planning Commission

Todd Deluccia, Cameron County Commissioners

Robert Sweitzer, Centre County Conservation District

Jon Eich, Centre County Commissioners

Jodi Brennan, Clearfield County Planning Commission

Donald Foster, Clearfield County Conservation District

Chuck Allen, Clearfield County Commissioners

Larry Butler, Clinton County Conservation District

Matthew Quesenberry, Elk County Planning Department

Kim Lanich, Elk County Conservation District

Bekki Titchner, Elk County Commissioners

Kristin Hullihen, Jefferson County Department of Development

Amber Siar, Jefferson County Conservation District

Thomas W. McFarland, Jefferson County Commissioners

Sandy Thompson, McKean County Conservation District

James Clark, McKean County Commissioners

Charlotte Dietrich, Potter County Planning Commission

Chad Moshier, Potter County Conservation District

Mitch Delong, Potter County Commissioners

Jan Hampton, At-Large Member—Cameron County Conservation District

Matthew Marusiak, At-Large Member—North Central PA Regional Planning & Development Commission

Greg Kruk, At-large Member—Jefferson County Conservation District



*Adam Dellinger, Coordinator Headwaters RC&D
and Wes Ramsey Coordinator Penn Soil RC&D*

Communities require energy. Nonrenewable sources for power generation, home and workplace, and transportation cause pollution and its harmful impacts. Energy conservation and the use of renewable fuels provide cost-effective and more sustainable alternatives

2009 Annual Report

HEADWATERS RC&D COUNCIL REVENUE AND EXPENSE SUMMARY For The Year Ending DECEMBER 31, 2009			
2009 REVENUE:			
Assessment Income		\$	7,750.00
Grant Income		\$	37,593.33
Personnel Services		\$	8,504.43
Interest Income		\$	15.40
Grazing Conf Registrations/Sponsors		\$	10,084.00
Biomass Energy Workshop		\$	1,120.00
Council/Trust Contract Income		\$	3,229.00
VISTA Cost-Share		\$	1,500.00
Endowment Expense Reimbursement		\$	7,819.37
Advance from Trust - owed to Unrest'd		\$	3,175.00
No Till Workshop Income		\$	462.02
Dry Hydrant Kits		\$	1,600.00
Donations		\$	168.00
GoodSearch		\$	25.07
Miscellaneous Income		\$	-
TOTAL REVENUE		\$	83,045.62
2009 EXPENSES:			
Salaries		\$	21,291.85
Project Expenses		\$	4,826.80
Storage Rental		\$	768.00
Payroll Taxes		\$	7,578.60
Dues		\$	925.00
Mileage		\$	350.10
Supplies		\$	58.58
Postage		\$	291.93
Lodging/Meals		\$	564.96
Audit & BCO Registration		\$	3,190.00
Insurance/Bond/Workmen's Comp		\$	5,129.23
Conference Expense		\$	160.00
Legal Fees		\$	388.50
Grazing Conference		\$	7,355.92
Biomass Energy Workshop		\$	716.07
Due Trust Restricted/SMTWD		\$	24,100.00
Due Penn Soil RC&D - Dry Hydrants		\$	800.00
Miscellaneous		\$	91.90
TOTAL EXPENSES		\$	78,587.44
REVENUE OVER/UNDER EXPENSES		\$	4,458.18



Headwaters RC&D Strategic Planning

A monumental and very motivational two-day Strategic Planning Session was held for Headwaters Council and Trust members November 17-18 at H.R. Stackhouse School, owned by Fish and Boat Commission bordering scenic Spring Creek in Bellefonte, Centre County. Georgia Abbey from Leadership Centre County was the facilitator for the fast paced, energetic, and invigorating two day session.

The success of the strategic planning brought the council a new and clear Mission as well as Goals and Action Initiatives that include; Council Sustainability, Public Outreach, and Board Development. Additional elements the Council will explore in 2010 include development of an Executive Director Position, Defining the Roles of Headwaters RC&D and Headwaters Charitable Trust, and developing methods to identify and prioritize high impact projects. The Council will continue to revisit the strategic plan to keep it fresh and up to date.



HEADWATERS CHARITABLE TRUST

The Headwaters Charitable Trust, formed in 1989 is a 501(c)3 organization that works to improve the quality of life through natural resource conservation projects and grants that result in community improvement, rural economic stability and environmental enhancement.

As a partnering organization to the Headwaters Resource Conservation and Development Council, the Trust provides project and financial

assistance for Council projects in Cameron, Centre, Clearfield, Clinton, Elk, Jefferson, McKean, and Potter counties.

Quarterly Trust meetings are held on the fourth Tuesday in January, April, July, and October, and rotate throughout each of the eight counties it serves. Board membership is comprised of one representative from each County, who either lives or works in the County they represent.

The Board members referred to as Trustees attend meetings in order to help guide the organization, to begin new projects, or continue to implement projects already underway. Trustees are community leaders who are valued for their diverse expertise and varied professional experiences.



Members of the Snow Shoe Rail Trail Association and other Volunteers gather to install a new bridge on a Headwaters Charitable Trust-owned recreation trail

The Trust provides project guidance, grant application assistance, bidding, management, and financial assistance to a variety of organizations working to improve their community's recreational opportunities or environment.

Examples of past projects include but are not limited to:

- Secured funding for rail-to-trail improvement efforts
- Installation of practices on farms that protect water quality
- Funding and management of alternative energy feasibility studies
- Sustainable forestry projects for private landowners
- Stream and river fishing and boat access ways



On-farm practices, such as streambank buffers and fencing protect water quality

More Current 2009 Trust Projects

- Secured and implemented the Snow Shoe Gillentown Trailhead Development, a \$100,000 PA-DCNR funded project, which improved the trailhead and installed restroom facilities.
- Secured Northwest Project Grass Stage II, a \$40,000 Pa-DEP Growing Greener Grant for funding to implement and install Best Management Practices (BMPs) for farm rotational grazing
- Completed the Peale Viaduct Safety Engineering Analysis, with \$2,000 Centre County Community Foundation funding and other monies, for a bridge study to identify safety improvements to the Snow Shoe Viaduct, a key link in the Snow Shoe Rails to Trails Association trail system.
- Secured funding and advance design for the REM Orcutt-Smail, an \$82,000 PA-DEP Sole Source funded project to design a replacement Acid Mine Drainage treatment system.

The Trust can be contacted at: Headwaters Charitable Trust, 478 Jeffers Street, DuBois, PA 15801, 814-375-1372 ext. 4.

Trust Members

J. Alan Stewart –Chair

June Sorg-Vice Chair

Jodi Brennan-Secretary

Jonathan Rockey-Treasurer

Steve VanEerden

John F. Alcorn

Mark Caldwell

Earl Brown

PHOTO CAPTURES FROM 2009



Jefferson County Aerial Seeding Project



Viaduct Bridge –Snow Shoe Rail Trail



Gillentown Trail head and Restroom



Project Grass—Best Management Practices



Sinnemahoning Grant recipients—Check presentation



Kane—Fuels for Schools and Beyond



Potter County No-Till Field Day



Biomass Workshop at Penn State



Sinnemahoning Round I Grant-Emporium Borough



Filson 7—Well Settling Pond



2009 NorthWest Grazing Conference—DuBois



Sinnemahoning Round I Grant-Bennett's Valley

Headwaters RC&D
478 Jeffers St., Bldg. 3 Suite D
DuBois, PA 15801

Voice: 814.375.1372 x4
Fax: 814.375.2453
info@headwaterspa.org
http://headwaterspa.org/

Headwaters RC&D Diversity Policy

In principle and in practice, Headwaters RC&D values and seeks diverse and inclusive participation in all projects and activities throughout the eight-county Headwaters RC&D area. Diversity refers to differences that significantly affect the way we experience ourselves and are treated by others. Headwaters RC&D will promote involvement and expand access to leadership opportunity regardless of race, ethnicity, gender, religion, age, sexual orientation, nationality, disability, appearance, geographic location, or professional level. We pledge to:

1. Serve the whole community
2. Make basic information readily available about our programs, mission and priorities
3. Recognize the cultural diversity of the communities we serve and, within the limits of our mission, seek to reflect this diversity in our projects and in the membership of our boards and/or among our staffs and partners
4. Have an aggressive outreach plan that encourages underserved and underrepresented individuals to become Council members and to receive council services
5. Hold public council meetings with advance announcements and to use meeting facilities accessible to disabled members of the public



Headwaters RC&D Staff Acknowledgements

The energy and enthusiasm that Adam Dellinger, Coordinator brought to Headwaters RC&D was clearly evident bringing the Council new and exciting ideas for the projects and a clear vision for the future. Dedicated and diligent staff make a world of difference to the success of an organization, and Headwaters RC&D has been blessed to have Pam Vota as the Fiscal Assistant from February of 2000 to July of 2009 when Pam decided to retire. Though we were sad to see Pam leave, she will always be remembered fondly by the Council and Headwaters Trust and all those she interacted with.



Adam Dellinger and Jan Hampton

The Council was very lucky to have Brittany Anderson accept the job as Fiscal Assistant. Brit-

tany started in July of 2009 with guidance from Pam before she retired. Brittany graduated from Clarion University of Pennsylvania with a Bachelors degree in Accounting. She loves being outdoors, shopping, canoeing, camping, ATV riding, hanging out with family and friends, and having cookouts and bonfires. Brittany has been an exceptional addition to the staff of Headwaters RC&D bringing with her exceptional skills and a bright spirited personality!

The Council would be remiss if we did not

mention Terry Marsh, Program Assistant since July 1990, and who we have to thank for daily operations, timely and meticulous meeting minutes and agendas, and someone you can always count on for support and to answer any questions you may have. Thank you Terry!



Brittany Anderson and Terry Marsh